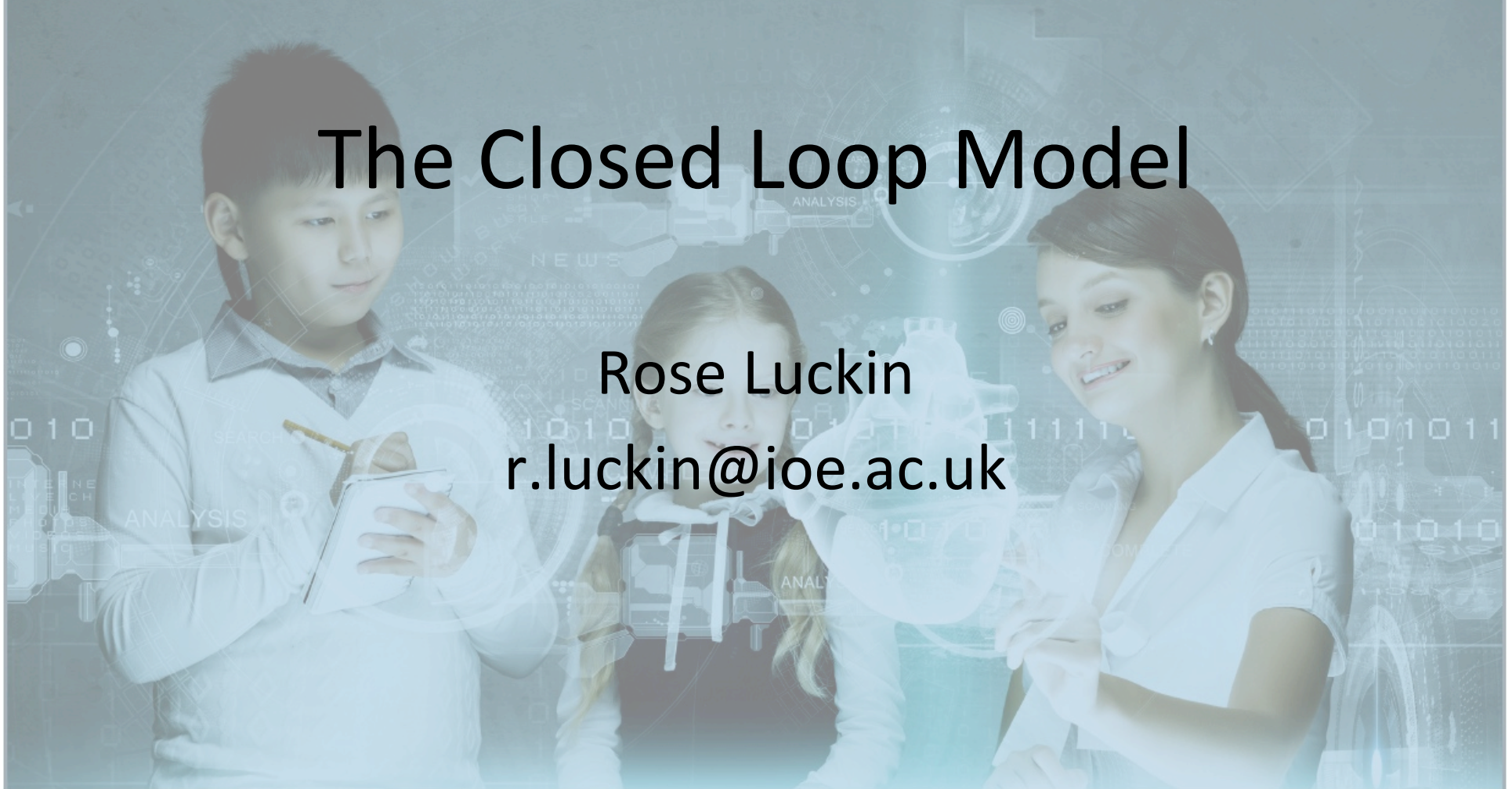


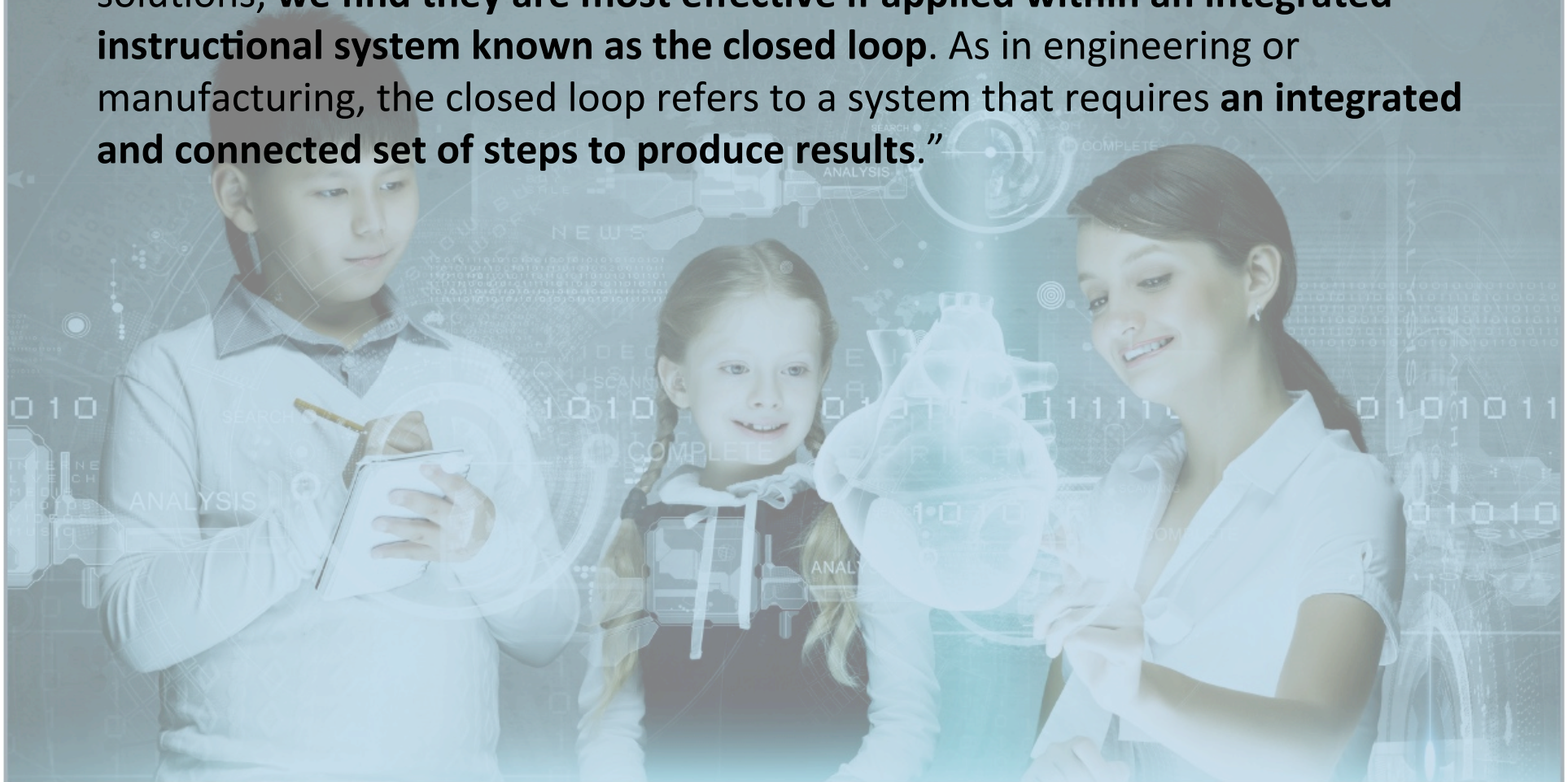
The Closed Loop Model

Rose Luckin
r.luckin@ioe.ac.uk



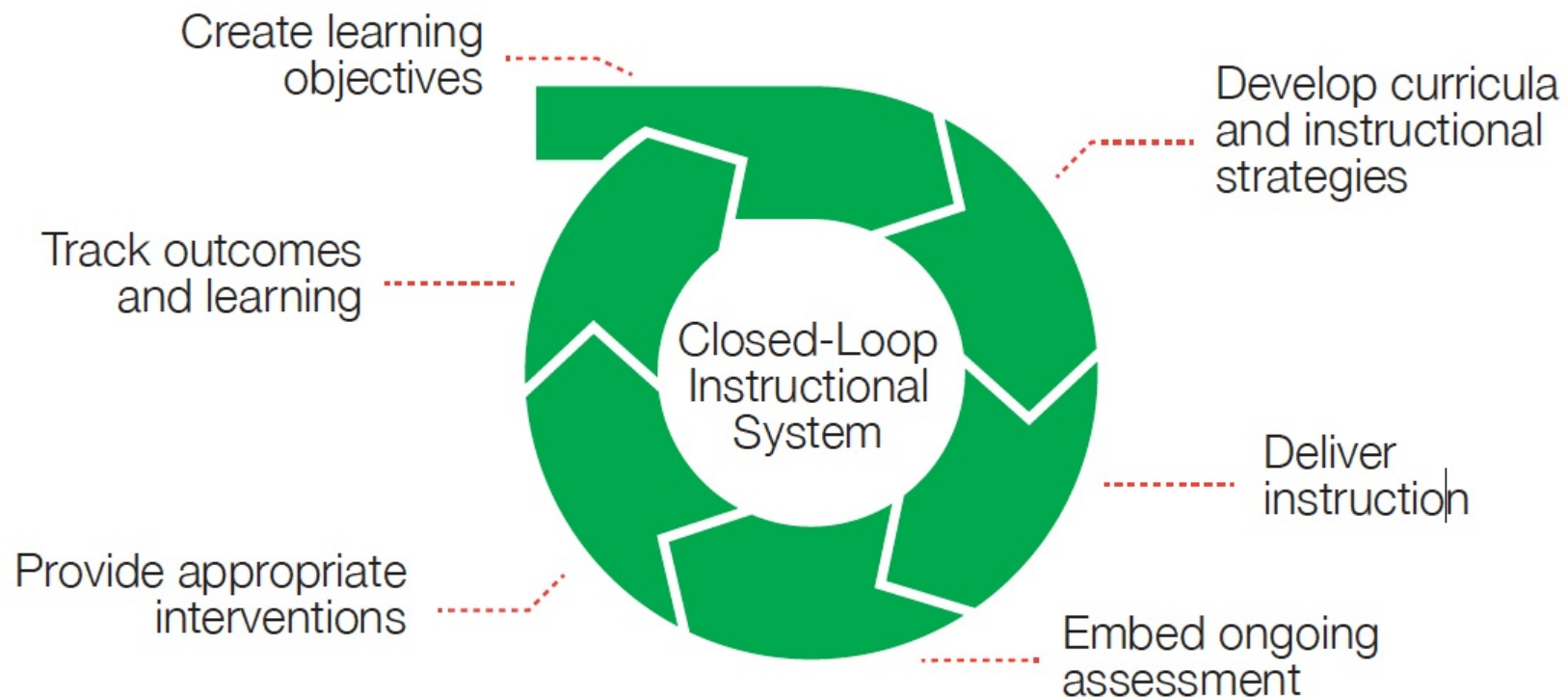
The Closed Loop Model

“But when educators add education technology to the mix of potential solutions, **we find they are most effective if applied within an integrated instructional system known as the closed loop.** As in engineering or manufacturing, the closed loop refers to a system that requires **an integrated and connected set of steps to produce results.**”



The Closed Loop

Exhibit 6: An instructional system known as the closed loop is necessary to address skills gaps



Calls for action: multi-stakeholder approach required to prepare students for 21st century



Policy makers

- Assess & re-align educational systems & standards to 21st century skills
- Create environment supporting innovation, both from schools & ed-tech players



Private Sector & Ed-tech Providers

- Develop products to fill gaps in 21st century skill measurement & instruction



Educators

- Develop and promote teacher tech expertise
- Evaluate technology for effective adoption throughout the closed-loop given unique country contexts



Funds & Alliances

- Invest in innovation incubators for ed-tech products and solutions in developing world
- Provide resourcing and advice to pilot tech-enabled models for competencies and character traits development

The Golden Triangle

How can I better communicate my research to teachers and companies?

Academia

Improved TEL:
Improved learning;
Better teaching
Increased sales
Better Research

Evidence

Industry

**Education:
teachers,
learners...**

How is research evidence relevant to me and how can I find out what teachers and learners think of my product?

How can I find out what works when using technology to support learning?

